

Pavillon Paul-Comtois
Local 3408

Jeunes explorateurs d'un jour

jeudi 21 avril 2022

Dicotylédone
racine / tige



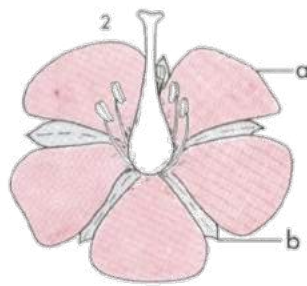
Monocotylédone
racine / tige

par Gilles Ayotte / Denise Auclair / Mélodie Paquet

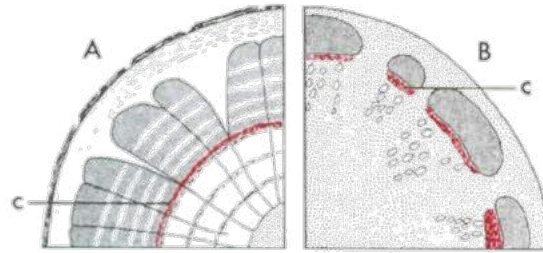
Dicotylédone



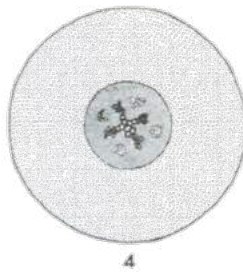
Nervation non parallèle



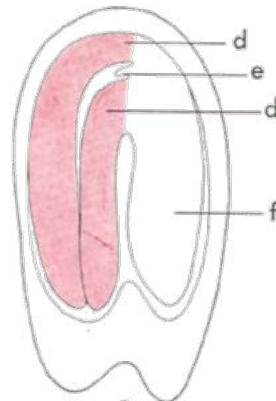
Fleurs 4 ou 5-mères



Eustèle. Cambium.

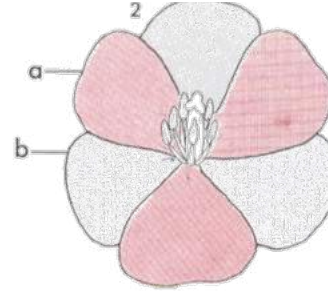


4



2 cotylédons

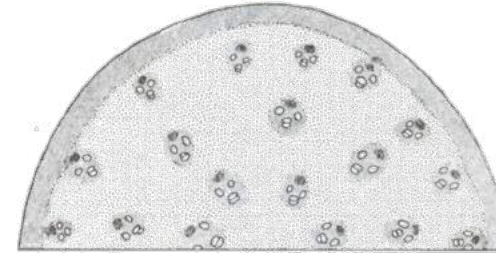
Monocotylédone



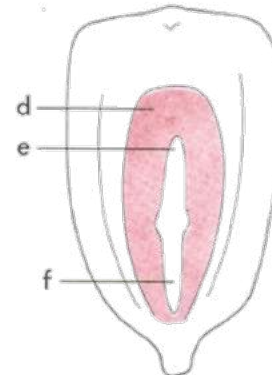
Fleurs trimères



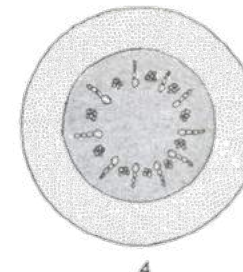
Nervation parallèle



Atactostèle. Cambium absent.

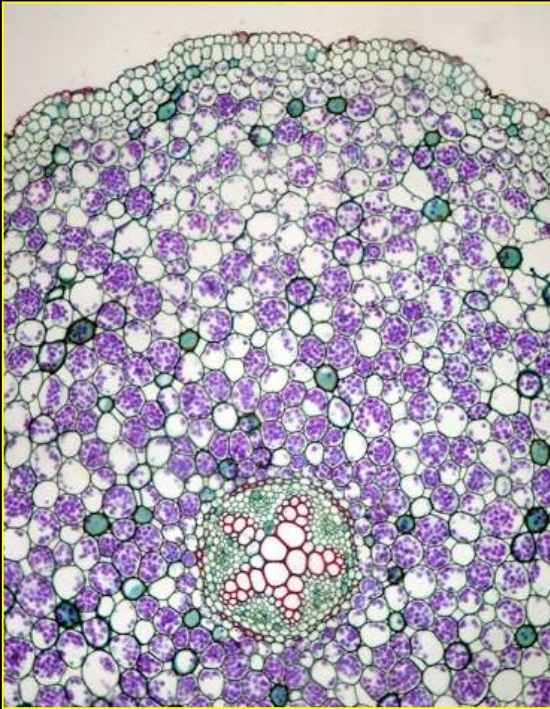


1 cotylédon



4

Racine

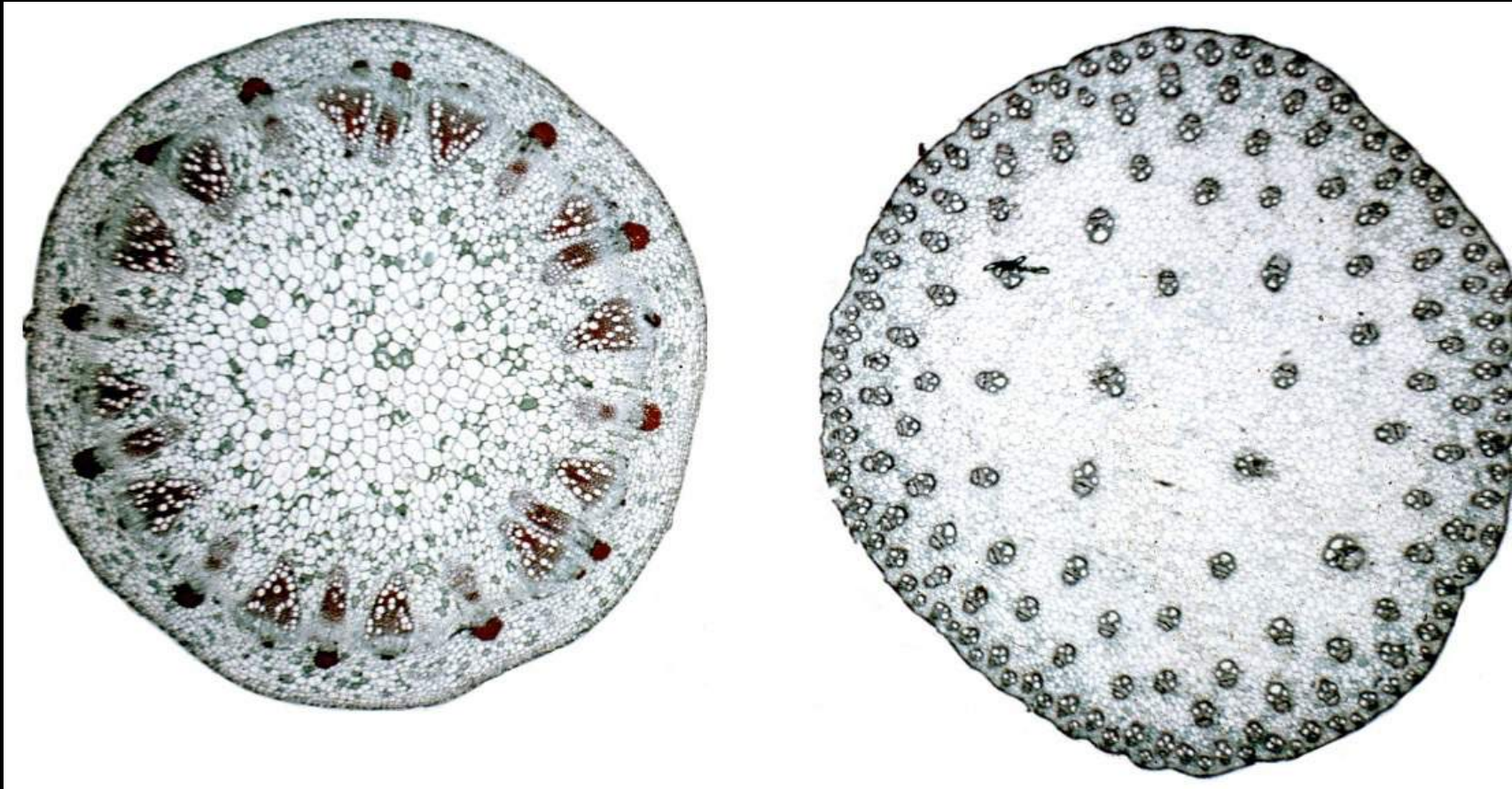


Dicotylédone



Monocotylédone

Tige

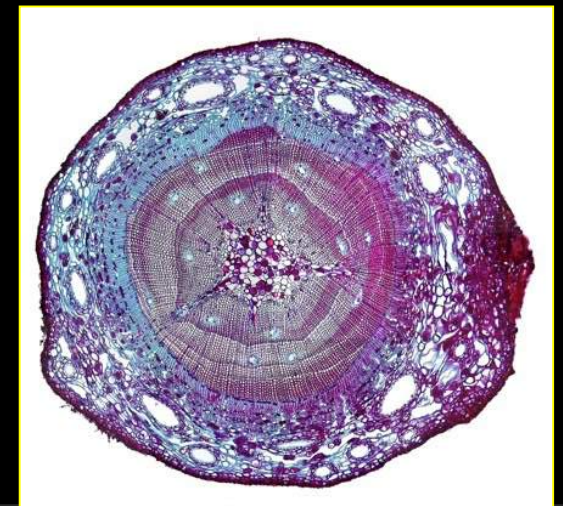
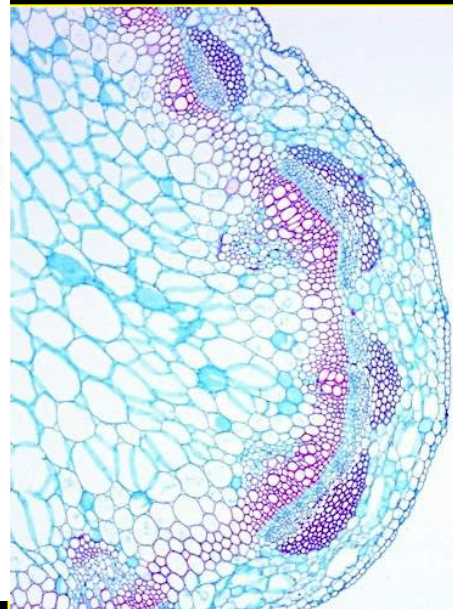
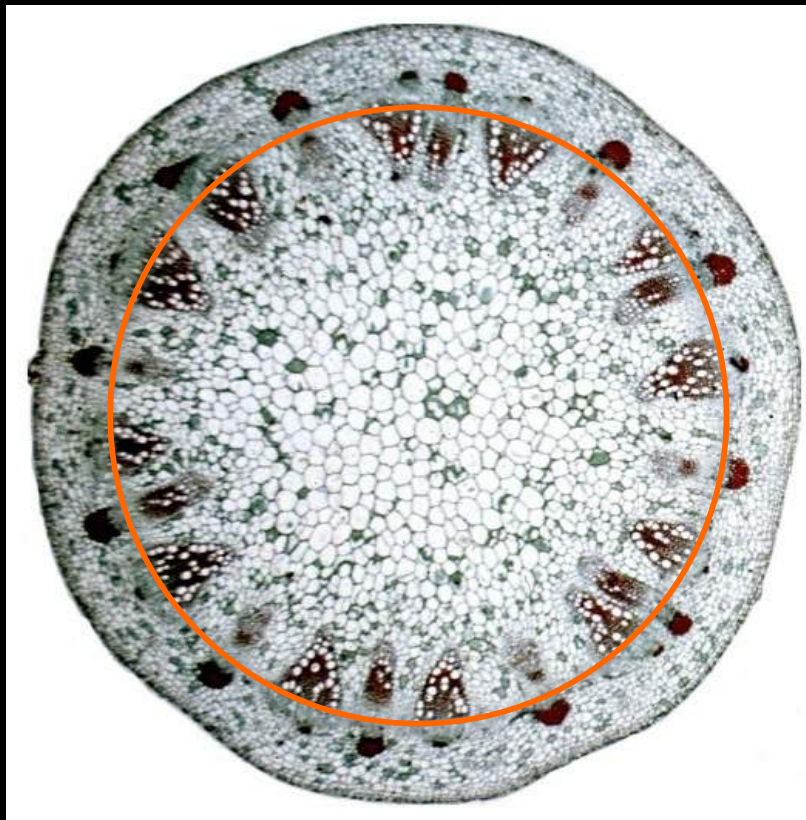
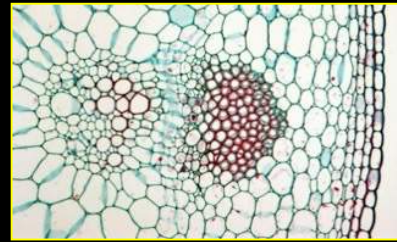


Dicotylédone

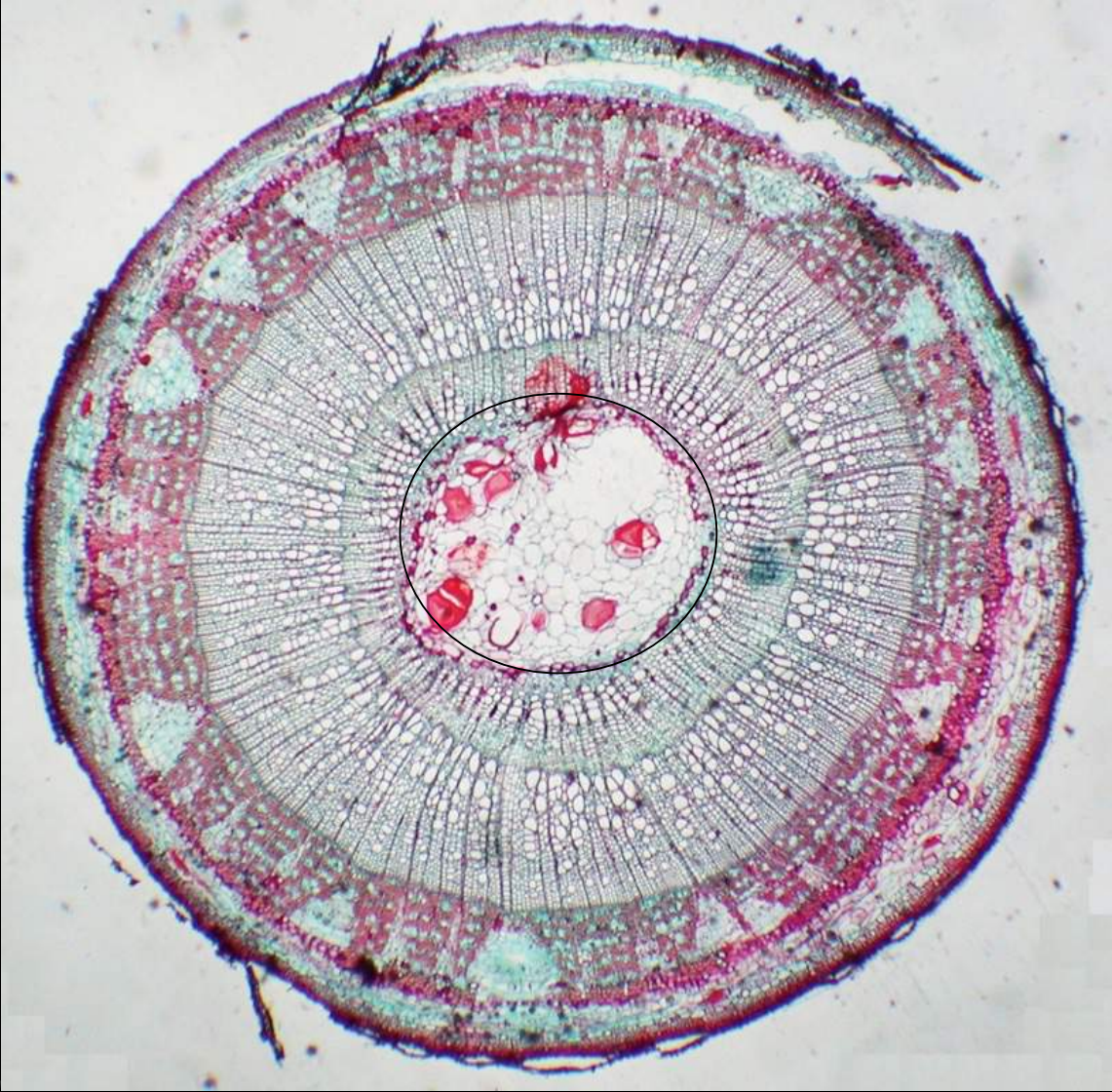
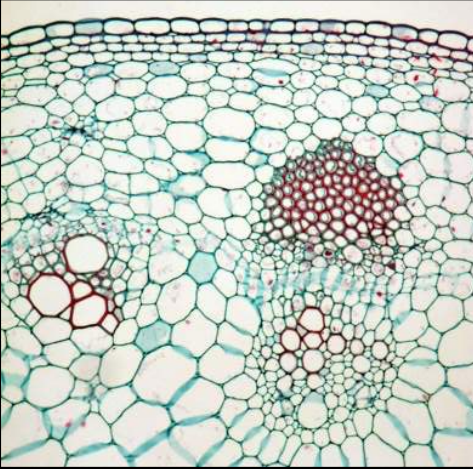
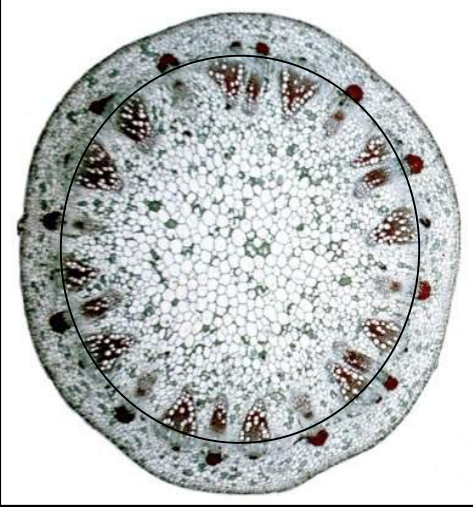
Monocotylédone

Tige Dicotylédone

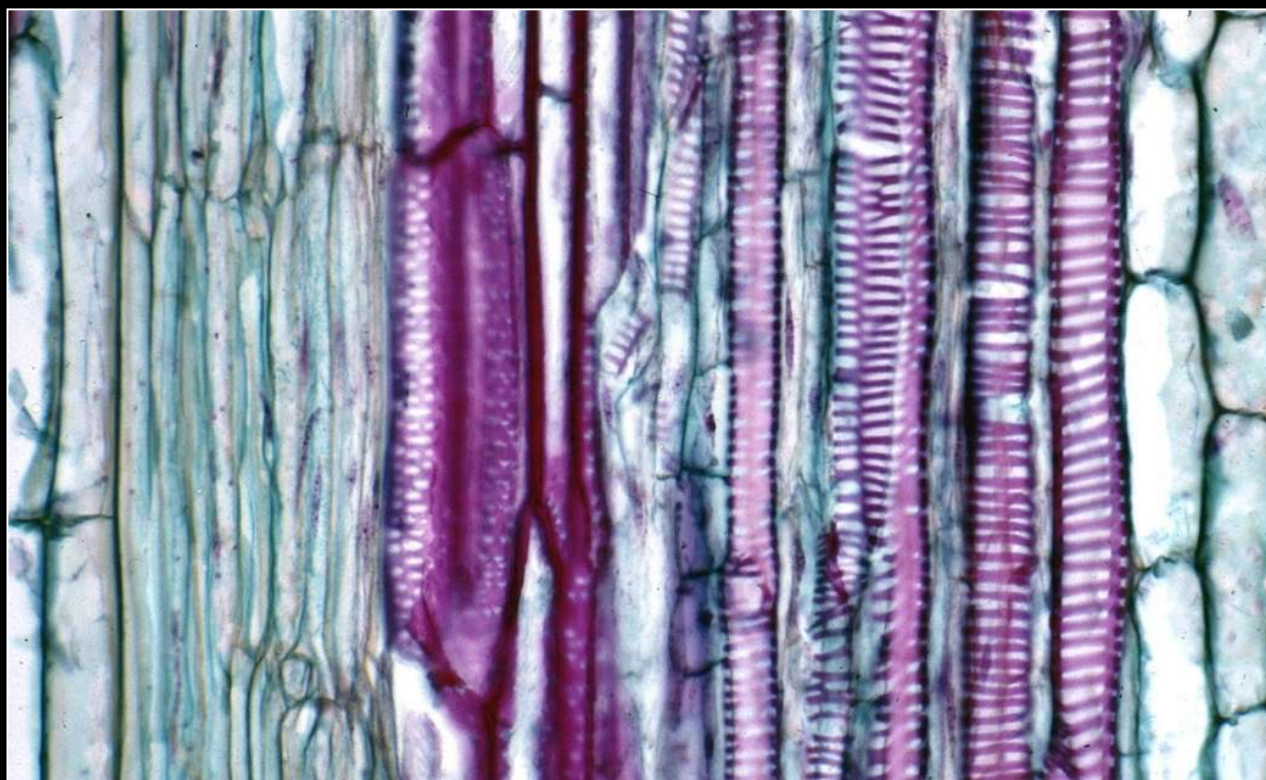
© Gilles Ayotte
21 avril 2022



Tige Dicotylédone



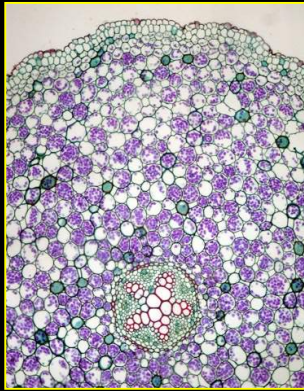
Tige



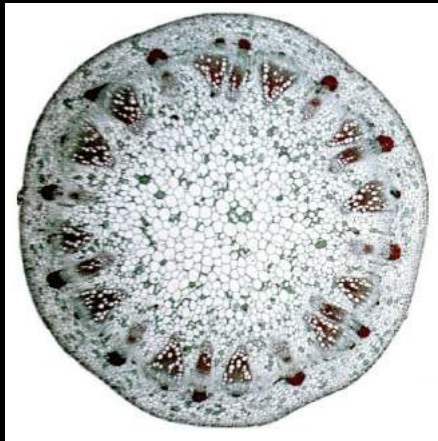
Phloème

Xylème

Dicotylédone

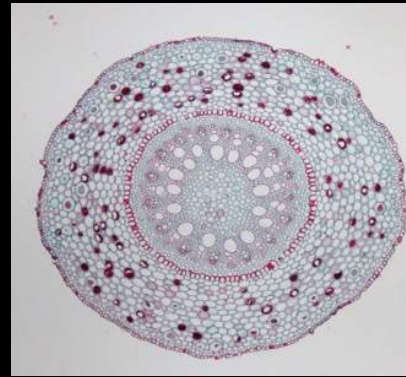


Racine

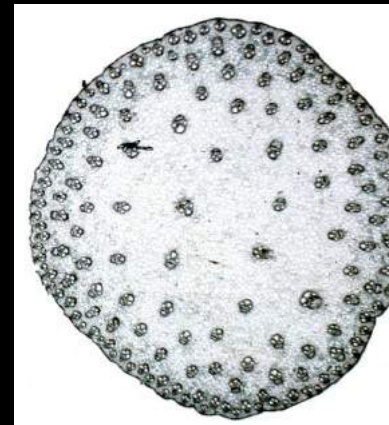


Tige

Monocotylédone



Racine



Tige