

Pavillon Paul-Comtois
Local 3408

Jeunes explorateurs d'un jour
jeudi 19 avril 2018

Anatomie et morphologie florales

Dicotylédone
racine / tige



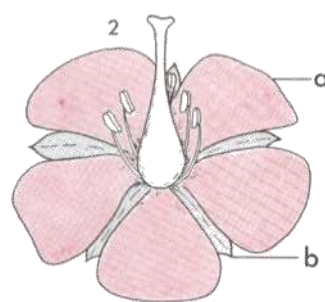
Monocotylédone
racine / tige

par **Gilles Ayotte et Denise Auclair**

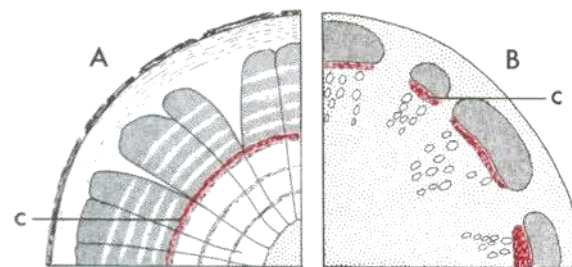
Dicotylédone



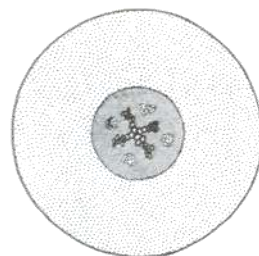
Nervation non parallèle



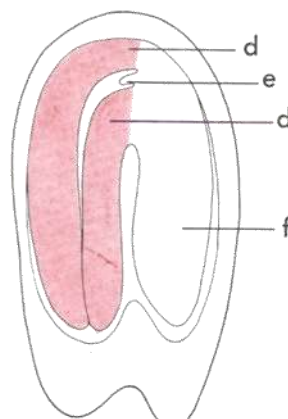
Fleurs 4 ou 5-mères



3
Eustèle. Cambium.

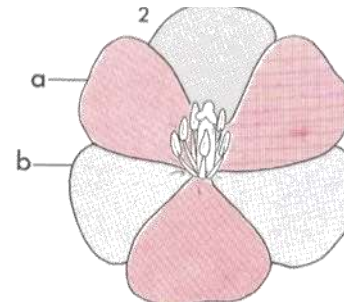


4



5
2 cotylédons

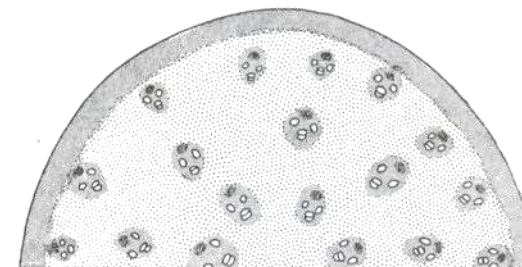
Monocotylédone



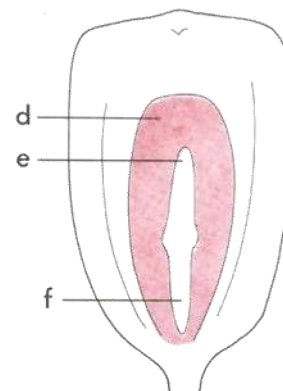
Fleurs trimères



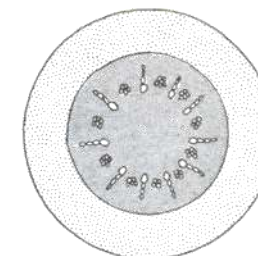
Nervation parallèle



3
Atactostèle. Cambium absent.

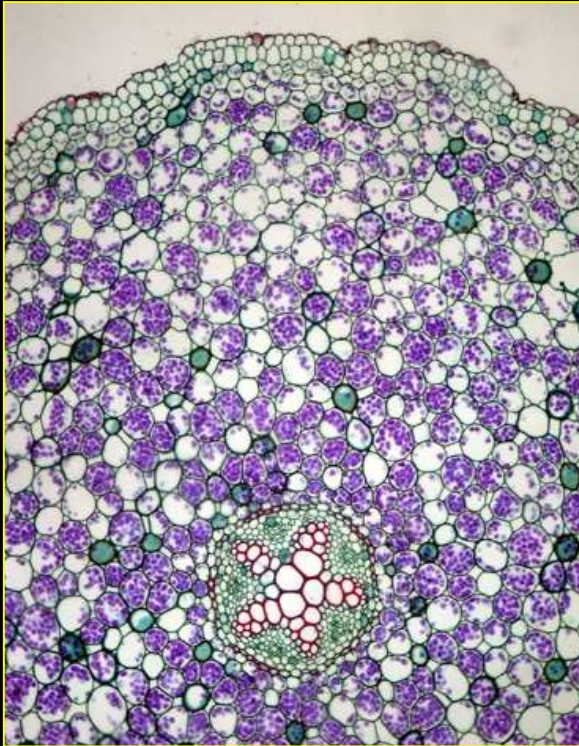


1 cotylédon

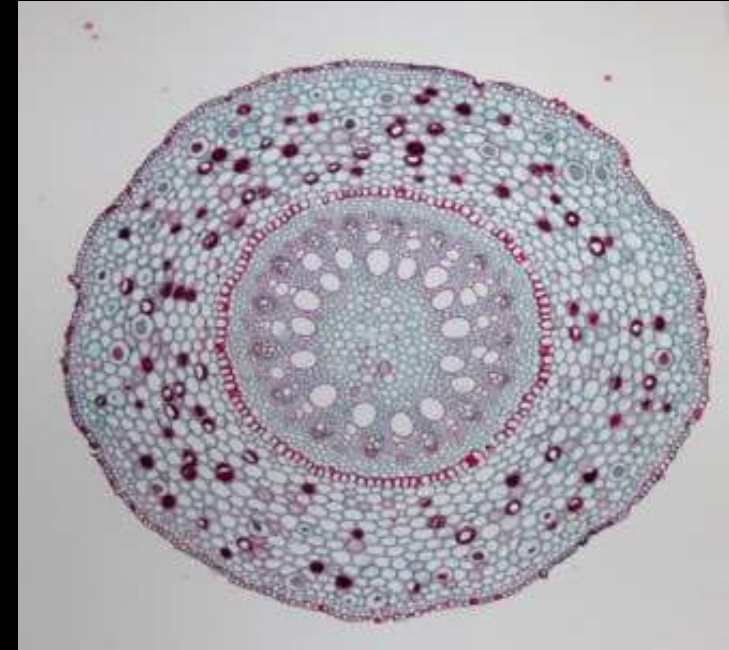


4

Racine

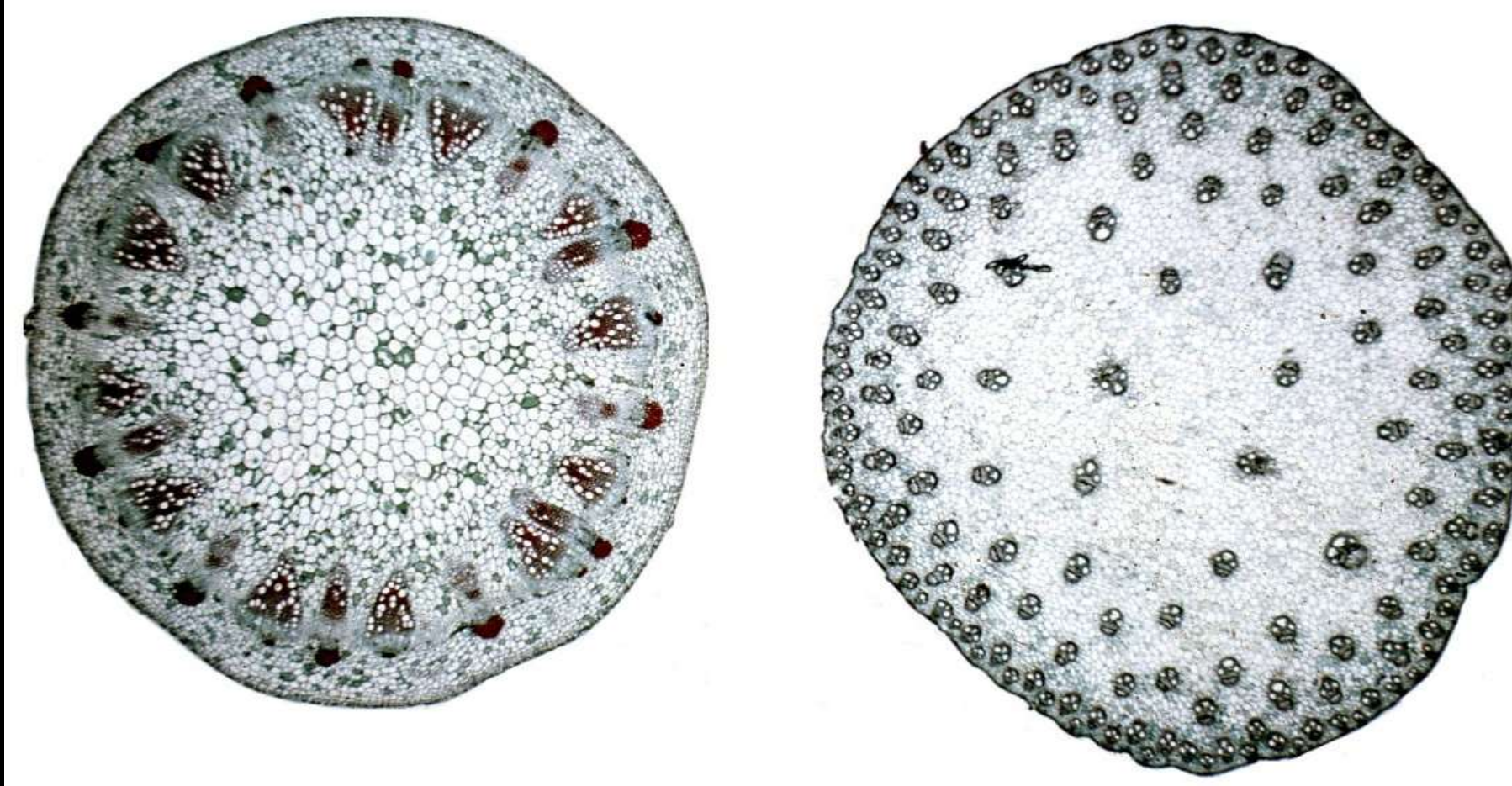


Dicotylédone



Monocotylédone

Tige

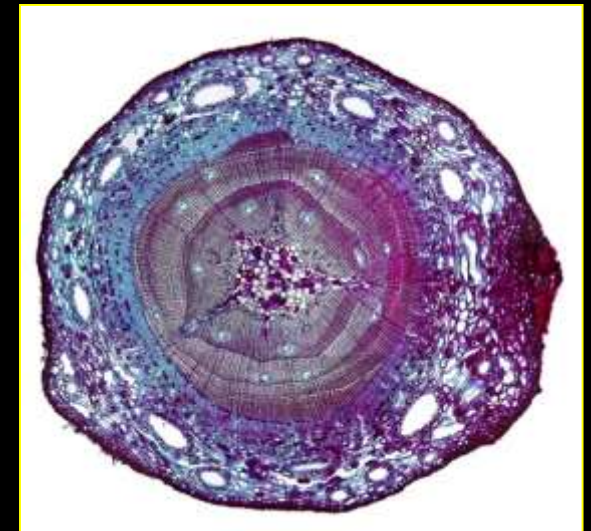
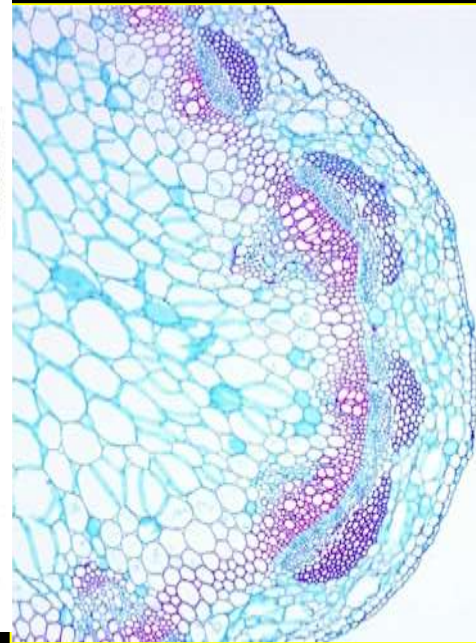
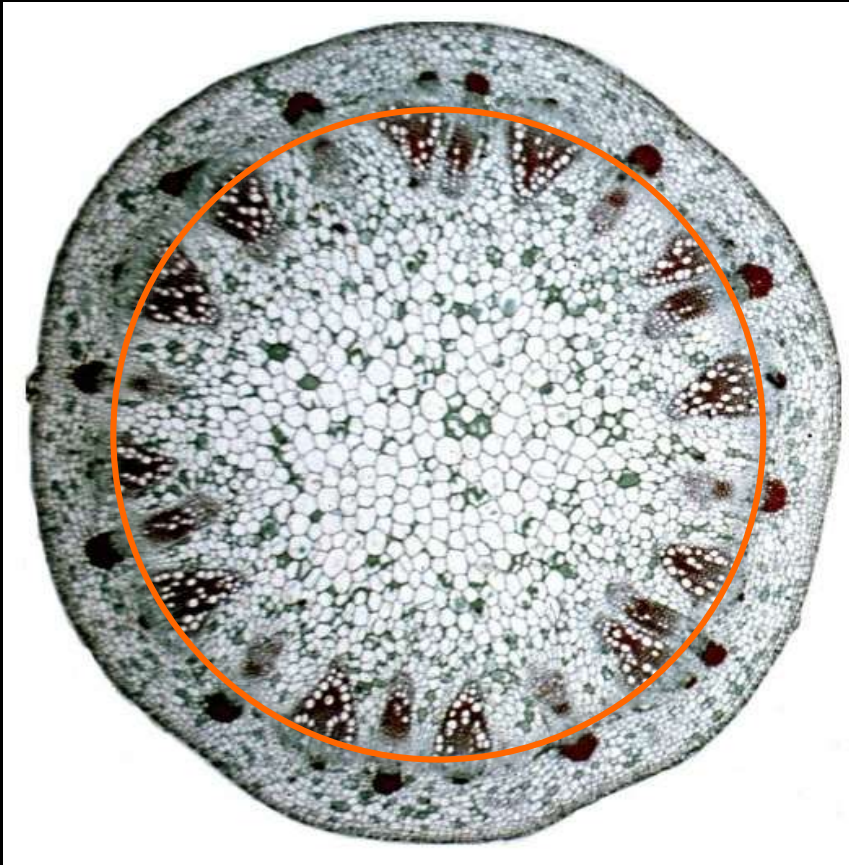
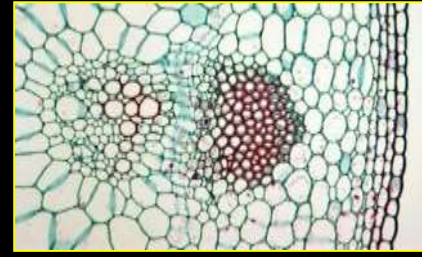


Dicotylédone

Monocotylédone

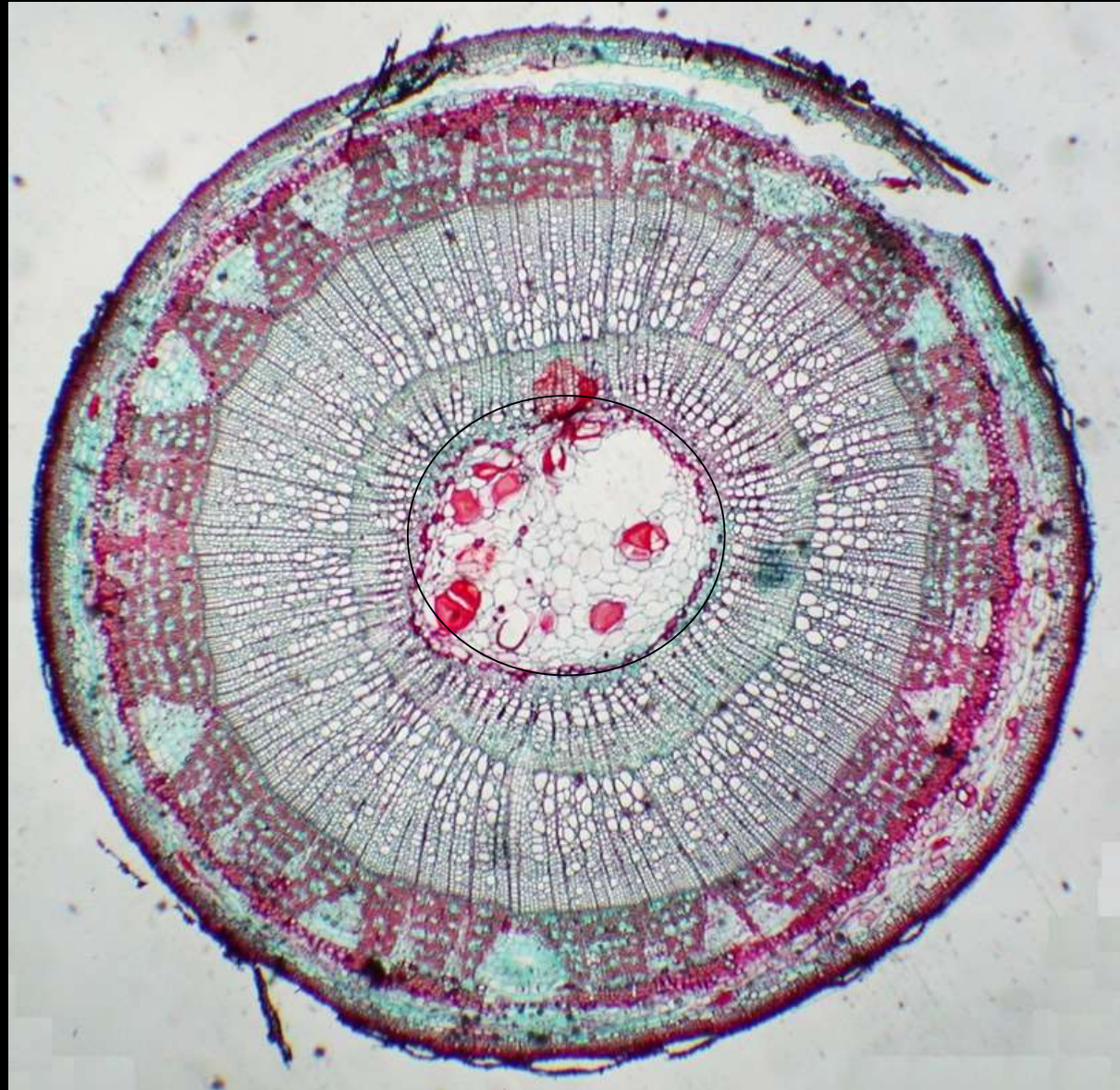
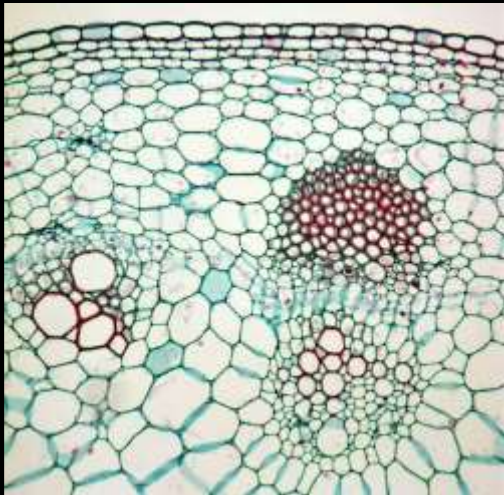
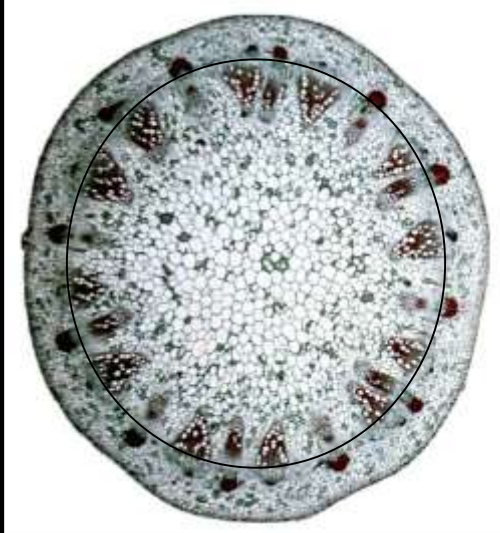
Tige Dicotylédone

© Gilles Ayotte
19 avril 2018

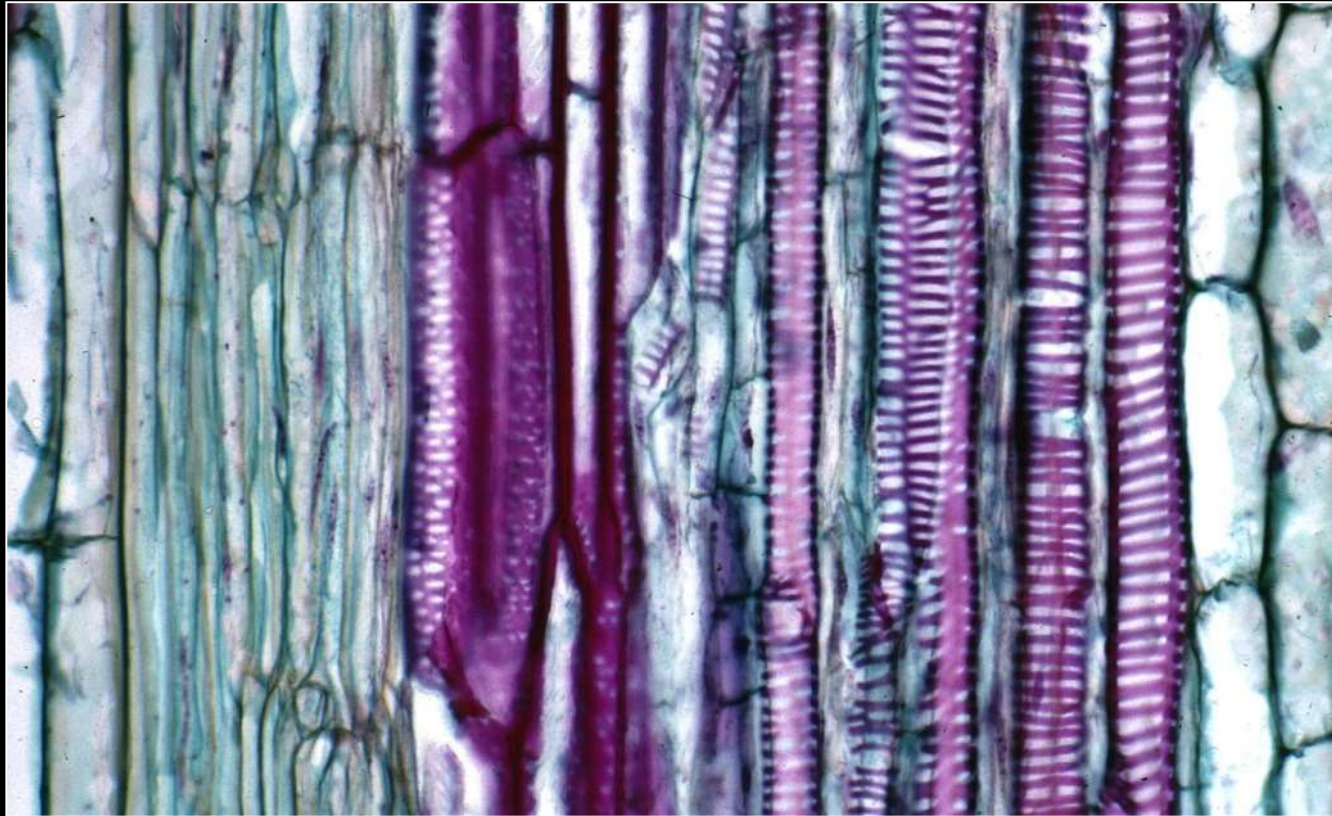


Tige Dicotylédone

© Gilles Ayotte
19 avril 2018



Tige



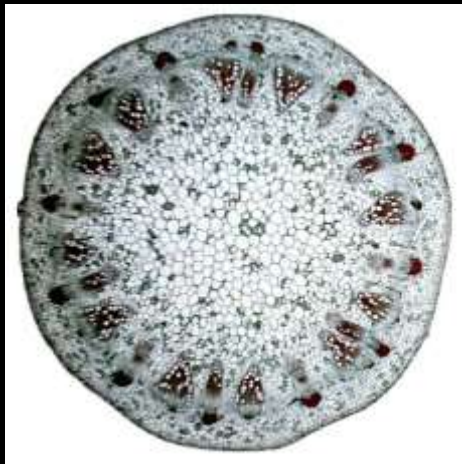
Phloème

Xylème

Dicotylédone

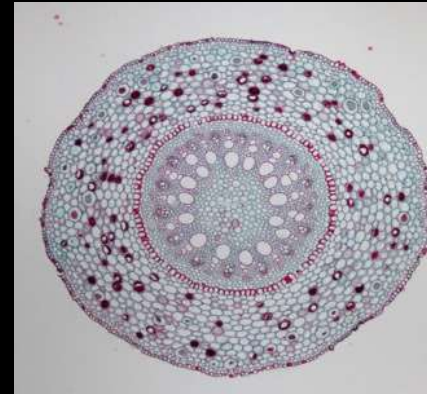


Racine

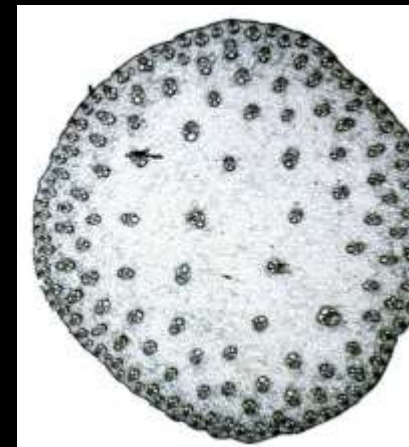


Tige

Monocotylédone



Racine



Tige