

Pavillon Paul-Comtois  
Local 3408

# Jeunes explorateurs d'un jour

jeudi 11 avril 2019

## *Anatomie et morphologie florales*

Dicotylédone  
racine / tige



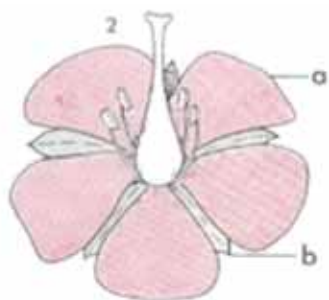
Monocotylédone  
racine / tige

par Gilles Ayotte / Denise Auclair / Mélodie Paquet

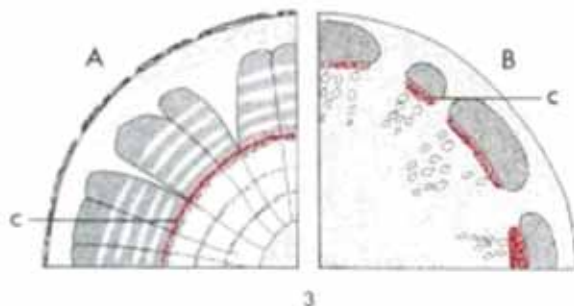
## Dicotylédone



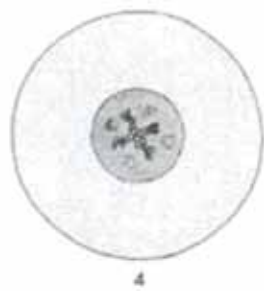
Nervation non  
parallèle



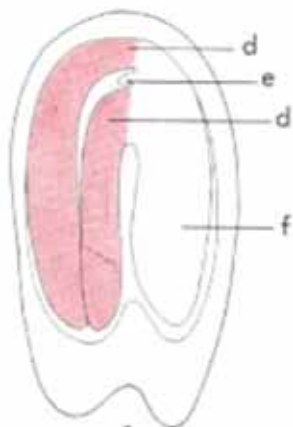
Fleurs 4 ou 5-mères



Eustèle. Cambium.

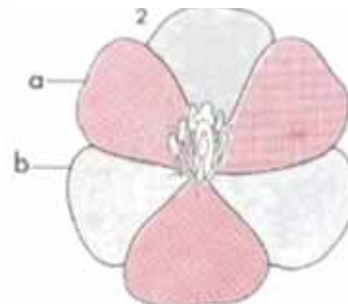


4



2 cotylédons

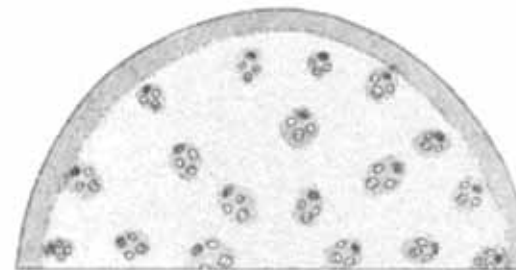
## Monocotylédone



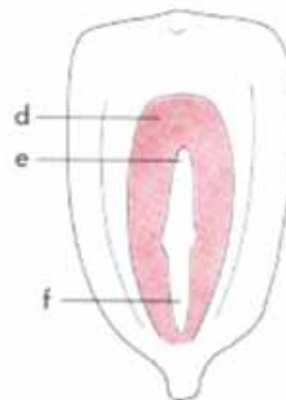
Fleurs trimères



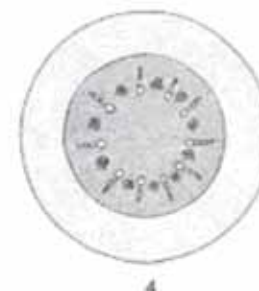
Nervation  
parallèle



Atactostèle. Cambium absent.

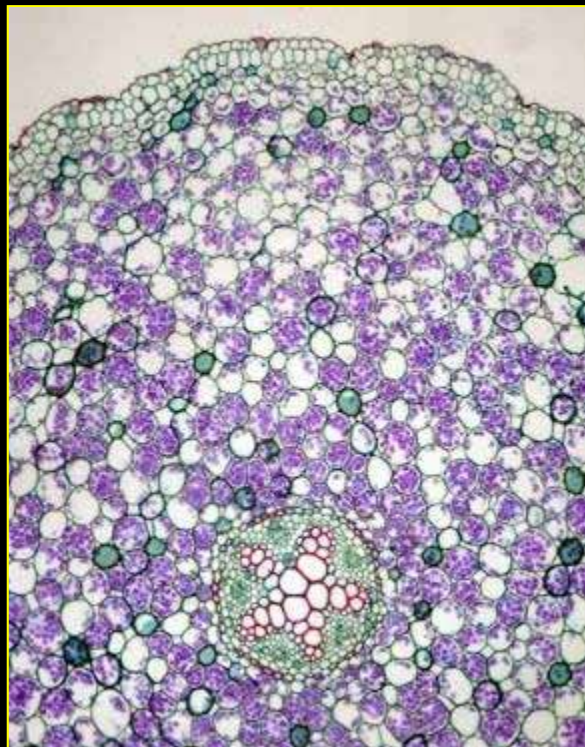


1 cotylédon



4

# Racine



Dicotylédone



Monocotylédone

# Tige

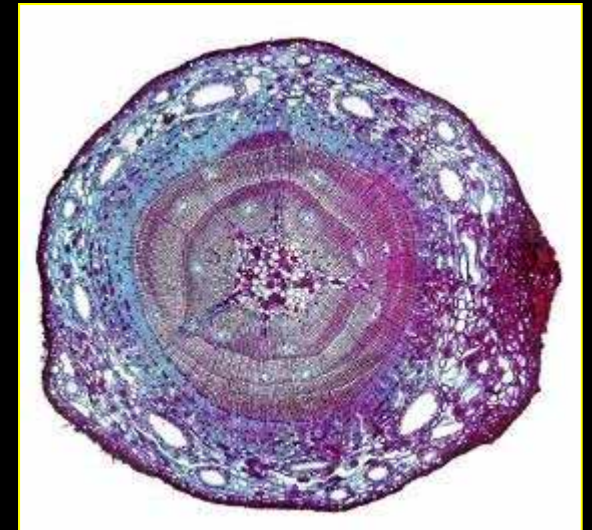
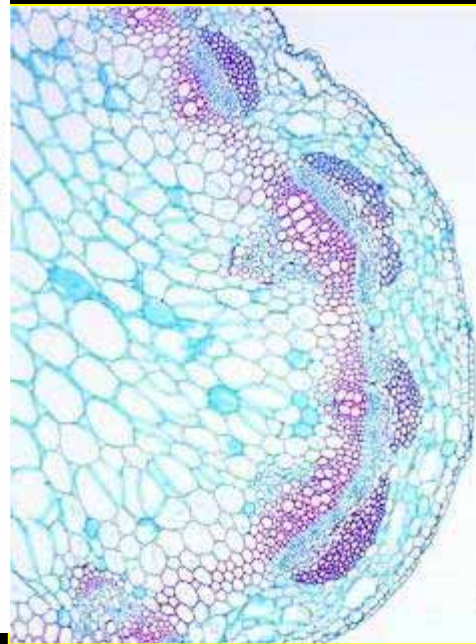
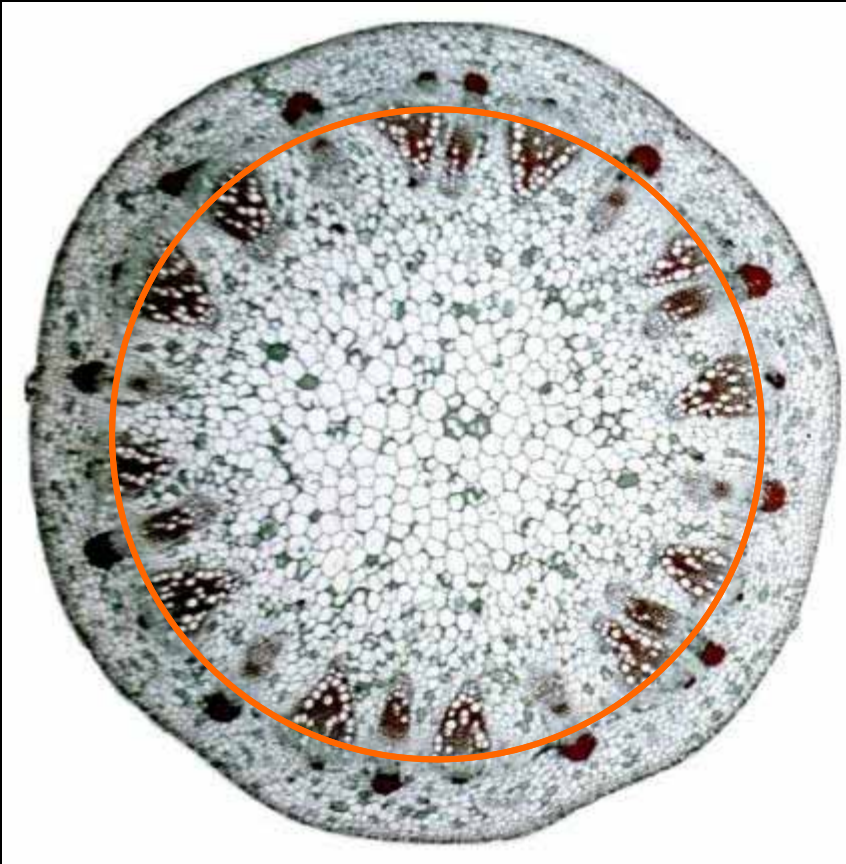
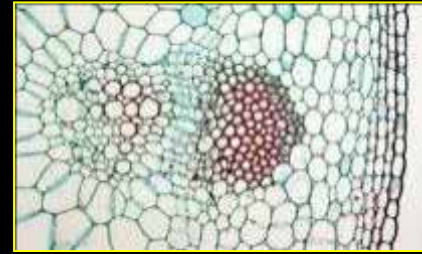


Dicotylédone

Monocotylédone

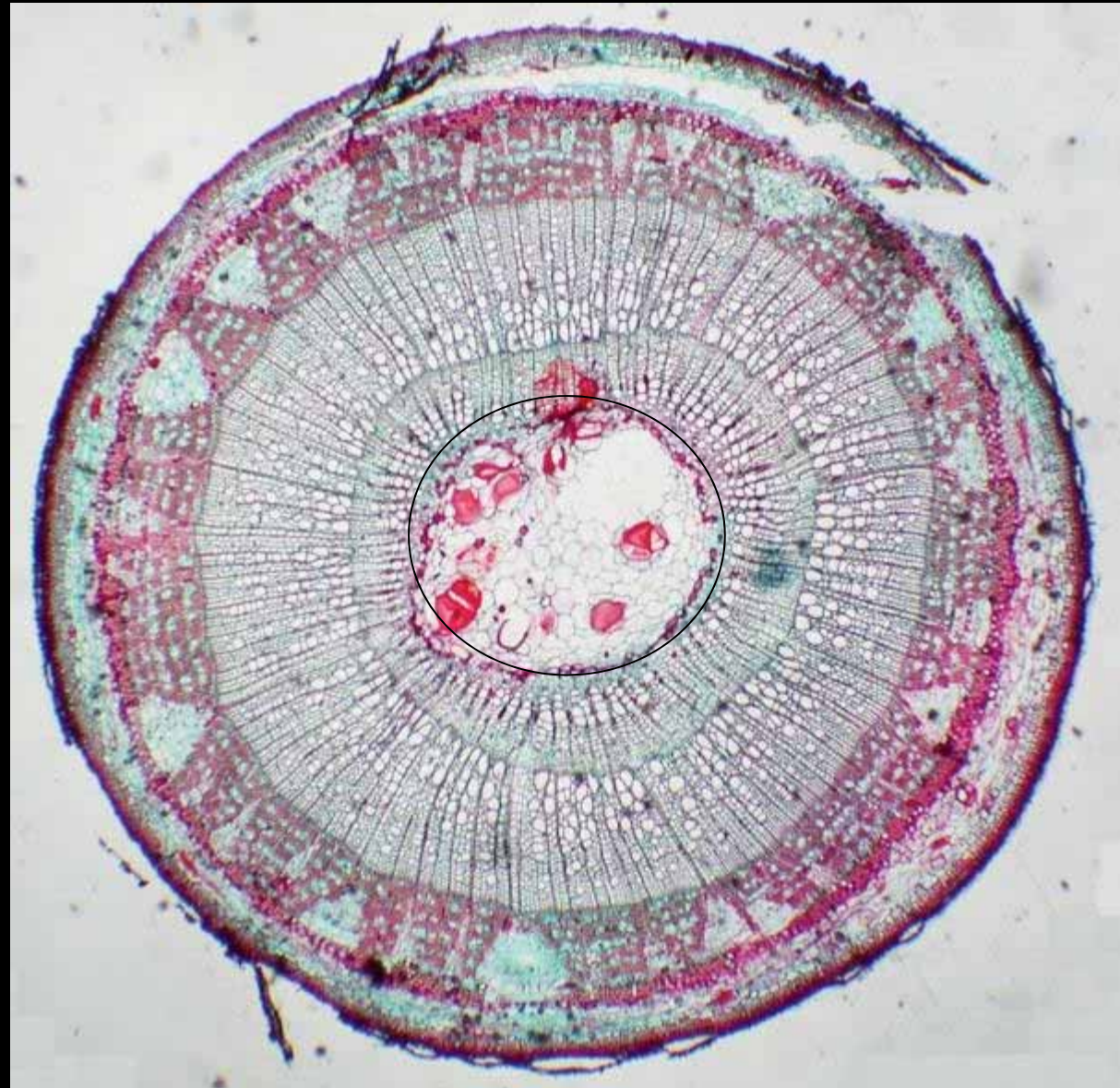
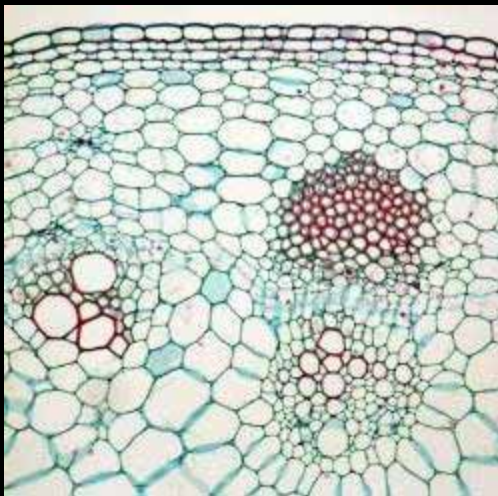
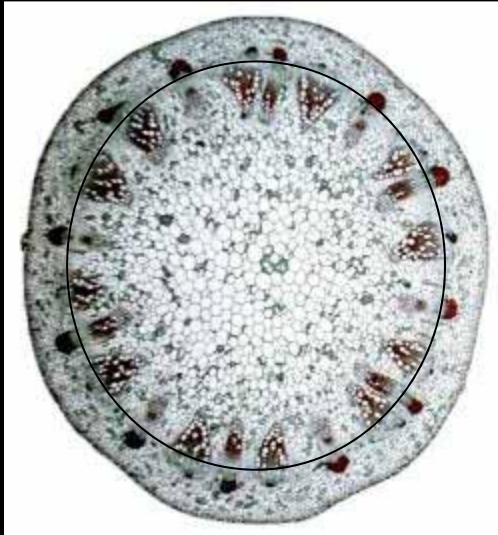
# Tige Dicotylédone

© Gilles Ayotte  
11 avril 2019

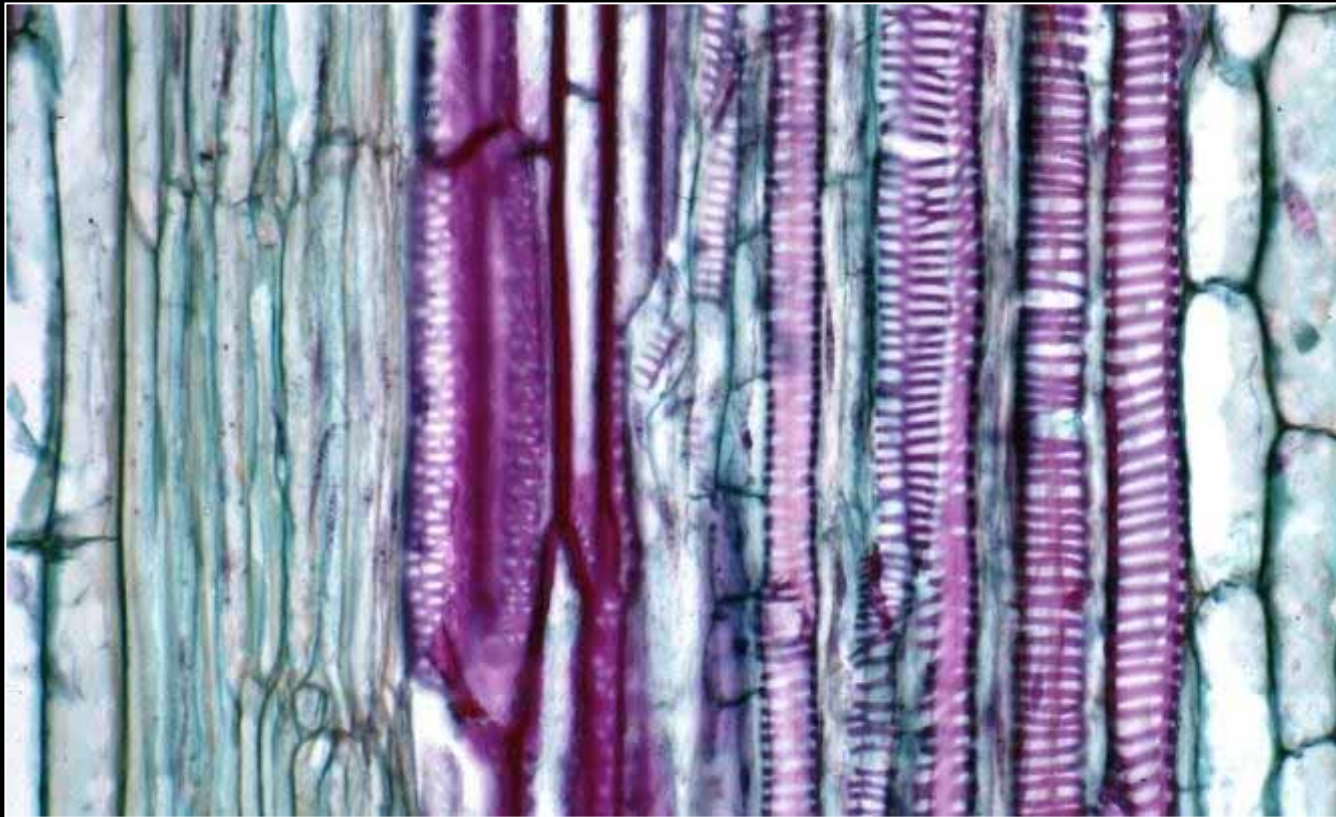


# Tige Dicotylédone

© Gilles Ayotte  
11 avril 2019



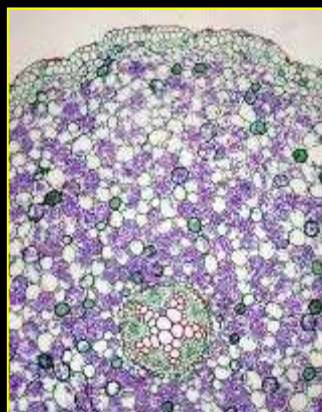
# Tige



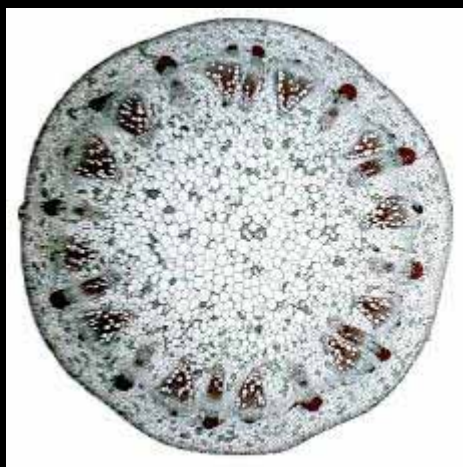
Phloème

Xylème

# Dicotylédone



Racine

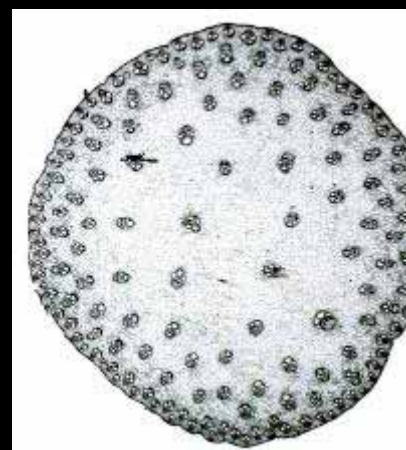


Tige

# Monocotylédone



Racine



Tige